
Connectors on the circuit board

The seven slots lined up along the back of the Apple IIe circuit board are the expansion slots, sometimes called *peripheral slots*. (See Figure 1-6.) These slots make it possible to attach additional hardware to the Apple IIe. Chapter 6 tells you how your programs deal with the devices that plug into these slots; Chapter 7 describes the circuitry for the slots themselves.

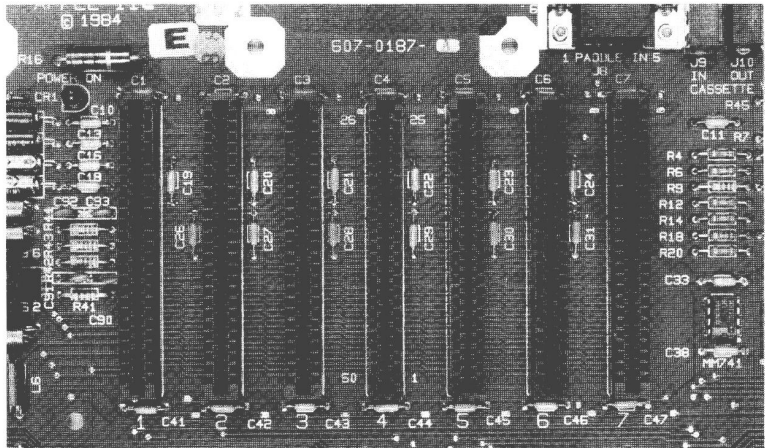


Figure 1-6
Expansion slots

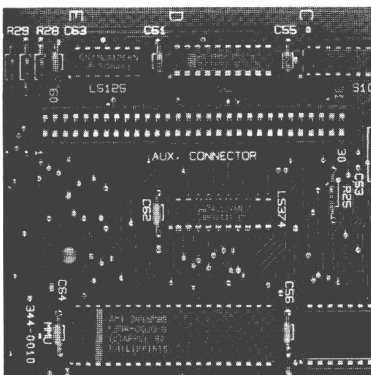


Figure 1-7
Auxiliary slot

The large slot next to the left side of the circuit board is the auxiliary slot (Figure 1-7). If your Apple IIe has an auxiliary memory card or 80-Column Text Card, it will be installed in this slot. The Apple IIe use this slot for the Extended 80-Column Text Card. Chapter 2 describes the 80-column display feature. The hardware and firmware interfaces to either type of card are described in Chapter 7.

There are also smaller connectors for game I/O and for an internal RF (radio frequency) modulator. These connectors are described in Chapter 7.